



<p>Tel: (345) 949 4528  Email: <a href="mailto:aisoria@caymanairports.com">aisoria@caymanairports.com</a>  Web: <a href="http://www.caymanairports.com">www.caymanairports.com</a></p>	<p><b>Cayman Islands Airports Authority</b>  Aeronautical Information Service  88B Owen Roberts Drive  PO Box 10098  Grand Cayman KY1-1001  CAYMAN ISLANDS</p>	<div style="display: flex; justify-content: space-around;"> <div style="text-align: center;">   Cayman Islands Airports Authority </div> <div style="text-align: center;">   CIVIL AVIATION AUTHORITY  of the Cayman Islands </div> </div> <p style="text-align: center;"><b>AIC</b>  07/21  February 23, 2021</p>
--	--	--

## Owen Roberts International Airport New Aerodrome Data

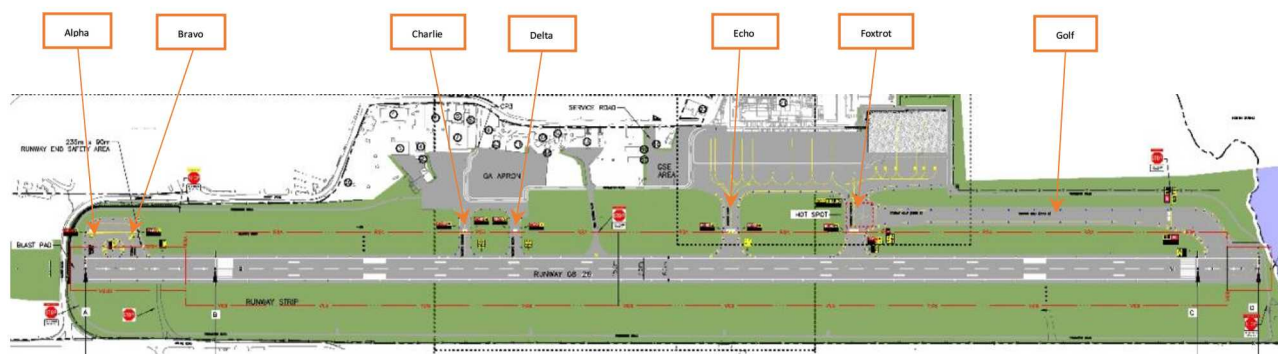
### 1. Introduction

1.1 The purpose of this Aeronautical Information Circular is to provide aircraft operators and pilots with new Owen Roberts International Airport aerodrome data resulting from completion of new aerodrome airside facilities.

### 2. Implementation Plan and Operational Data

2.1 Effective from 1000 UTC February 24 2021, newly constructed airside facilities which include use of runway 08 extension to the west, a partial parallel taxiway north of runway 26 threshold and additional apron parking stands east of the terminal will become operational.

2.2 Construction of the runway extension west of runway 08 threshold and additional taxiways has resulted in changes to taxiway designations starting from the new runway extension located on the western end of runway to the eastern end of runway next to runway 26 threshold. Taxiway 'A' and 'B' is now located on the northside of the new runway extension. Therefore, all other taxiway designations are alphabetically assigned from west to east as indicated in the below drawing.



2.3 Runway guard lights consisting of a pair of unidirectional yellow lights which flash continuously are positioned at each side of a taxiway at the marked and signed holding position where the taxiway is about to join runway 08/26. Aircraft and vehicles are required to wait at taxiway holding positions until given clearance by ATC to proceed onto the runway. The purpose of runway guard lights is to warn pilots, and drivers of vehicles when they are operating on taxiways, that they are about to enter a runway.

2.4 The tables below contain new data that is beneficial to aircraft operators and pilots for flight planning and navigation purposes. However, aircraft operators should note that new data not currently contained in the Cayman Islands AIP has not been surveyed and will be based on verified design values until ICAO Annex 14 aerodrome surveys are met in the near future.

2.5 Aircraft operators and pilots are required to follow the appropriate ATC instructions when using Owen Roberts International Airport airside facilities.

### 2.5.1 Apron, Taxiways and Check Locations Data

1.	Apron surface and strength	Surface: Asphalt and Concrete Strength: Aircraft stands 1-8, 43/F/B/W/T Aircraft stands 9-14, 67/R/B/W/T
2.	Taxiway width, surface and strength	Width: A - 23 M, B - 23 M, C - 23 M, D - 23 M, E - 28 M F - 28 M, G - 23 M. Surface: A- Asphalt B- Asphalt C- Asphalt D- Asphalt E- Asphalt F – Asphalt G-asphalt  Strength: 'A' 111/F/D/XT 'B' 111/F/D/XT 'C' 85/F/A/W/T 'D' 78/F/A/W/T 'E' 30/F/A/W/T 'F' 35/F/A/W/T 'G' 111/F/D/X/T
3.	VOR checkpoints VOR checkpoint Frequency  Pre-Flight Altimeter check location  Aircraft stands	NIL NIL  NIL  1: 191741.95N 812131.92W 4: 191742.93N 812127.72W 1A: 191742.03N 812131.62W. 5: 191743.25N 812126.39W 2: 191742.24N 812130.56W 6: 191743.57N 812125.03W 2A: 191742.47N 812129.78W 7: 191743.91N 812123.69W 3: 191742.62N 812129.08W 8: 191744.27N 812122.21W 9: 191745.11N 812120.77W 10: 191745.93N 812120.30W 11: 191745.93N 812119.56W 12: 191746.25N 812119.56W 13: 191746.56N 812117.66W 14: 191746.57N 812116.87W
4.	Remarks	Aircraft on stands 12 to 14 to pushback and pull forward to abeam stand 11 before starting engines

### 2.5.2 Surface Movement Guidance and Control System and Markings

1.	Use of aircraft stand ID signs, TWY guidelines and visual docking/parking guidance system of aircraft stands	TWY and RWY signs at all holding positions. Parking position signs and markings at Main Terminal Apron.
2.	RWY and TWY markings and LGT	RWY: Designation, THR, TDZ, center line markings, runway edge/end marked and lighted as appropriate.  TWY: Centerline lights taxiway E & F only. Edge lights TWY A, B, C, D, E, F, G. Holding position at all TWY/RWY intersections marked. TWY Intermediate reporting point GOLF 1
3.	Stop bars	NIL

4.	Remarks	NIL
----	---------	-----

### 2.5.3 Runway Physical Characteristics

Designation RWY NR	TRUE & MAG BRG	RWY Dimensions (M)	Strength (PCN) and Surface of RWY	THR coordinates	THR elevation and Highest elevation of TDZ of Non- Precision APP RWY	
1.	2.	3.	4.	5.	6.	
08	0760 GEO 0800 MAG	2398 x 45	84/F/C/X/T Asphalt Grooved	191725.57N 812203.43W	THR 2.4 M/8 FT	
26	2560 GEO 2600 MAG	2398 x 45	84/F/C/X/T Asphalt Grooved	191742.45N 812052.49W	THR 1.7M/5 FT	
Slope of RWY	SWY Dimensions (M)	CWY Dimensions (M)	Strip Dimensions (M)	OFZ	RESA	Remarks
7.	8.	9.	10.	11.	12.	13.
Nil Nil	Nil Nil	274 x 150 150 x 150	2518 x 150 2518 x 150	Nil Nil	90 x 90 203 x 90	NIL
Origin of Approach Surface	Location	Slope of Approach Surface	Origin of Take- off Surface	Location	Slope of Take-off Surface	Remarks
14.	15.	16.	17.	18.	19.	20.
08	60 m West of disp. threshold	1:40 / 2.5%	08	End of CWY	1:50 / 2%	NIL
26	60 m East of disp. threshold	1:40 / 2.5%	26	End of CWY	1:50 / 2%	NIL

### 2.5.4 Declared Distances

RWY Designator	TORA (M)	TODA (M)	ASDA (M)	LDA (M)	Remarks
1.	2.	3.	4.	5.	6.
08	2274	2548	2274	2011	THR displaced 264 m
26	2135	2285	2135	2011	THR displaced 124 m

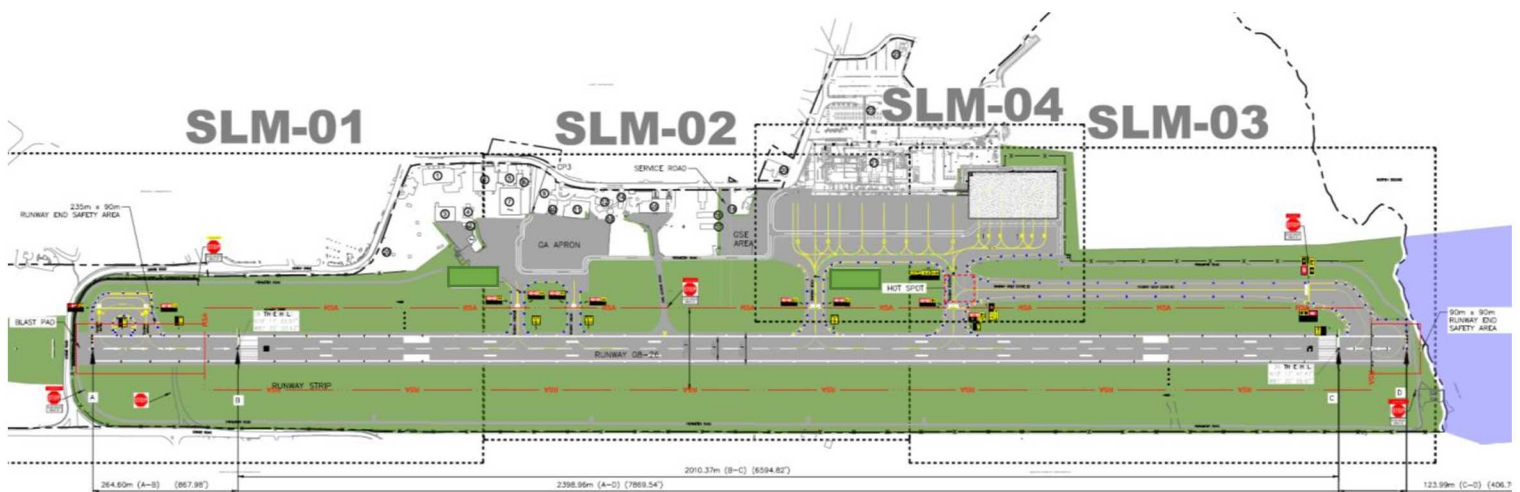
## 2.5.5 Runway and Approach Lighting

RWY Designator	APCH LGT Type LEN INTST	DTHR LGT Color WBAR	PAPI	TDZ LGT LEN	RWY Center Line LGT Length, spacing, Color, INTST	RWY Edge LGT LEN, spacing Color INTST	RWY End LGT Color WBAR	SWY LGT LEN (M) Color	Remarks
1.	2.	3.	4.	5.	6.	7.	8.	9.	10.
08	SALS 340 M LIM	Green	PAPI Left / 3 <sup>0</sup> (8 FT)	Nil	Nil	2398 m *60 m White (1654m), Yellow (480 m) LIH Starter Ext lit Red (264m) LIH	Red -	Nil	Nil
26	SALS 112 M LIM	Green	PAPI Left / 3 <sup>0</sup> (5 FT)	Nil	Nil	2398 m * 60 m White (1649m), Yellow (625 m) LIH Starter Ext lit Red (124m) LIH	Red -	Nil	Nil

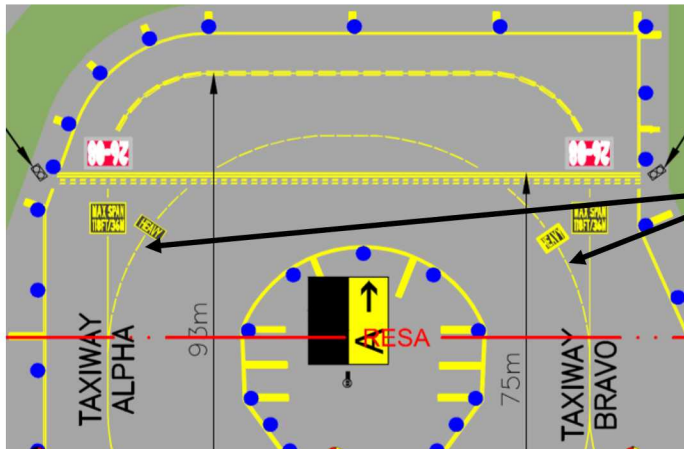
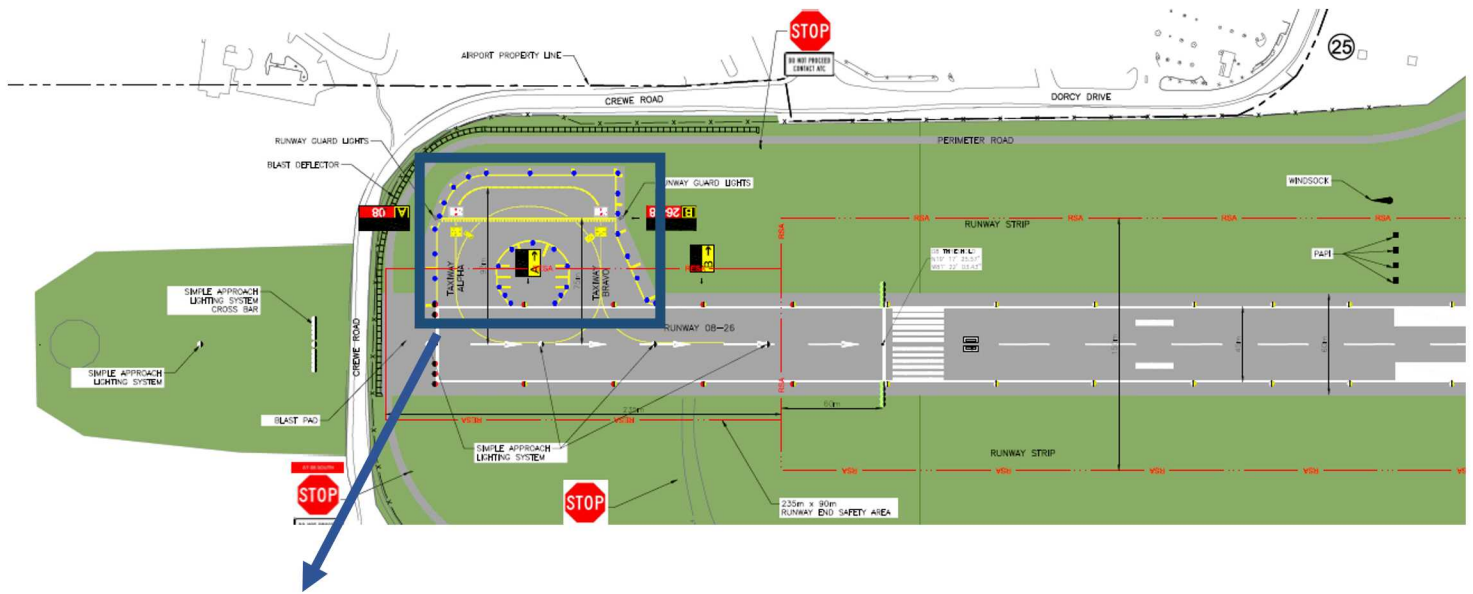
\* Runway 08 starter extension edge light spacing 53m

## 3. New Aerodrome Layout Drawings

### 3.1 Aerodrome Chart

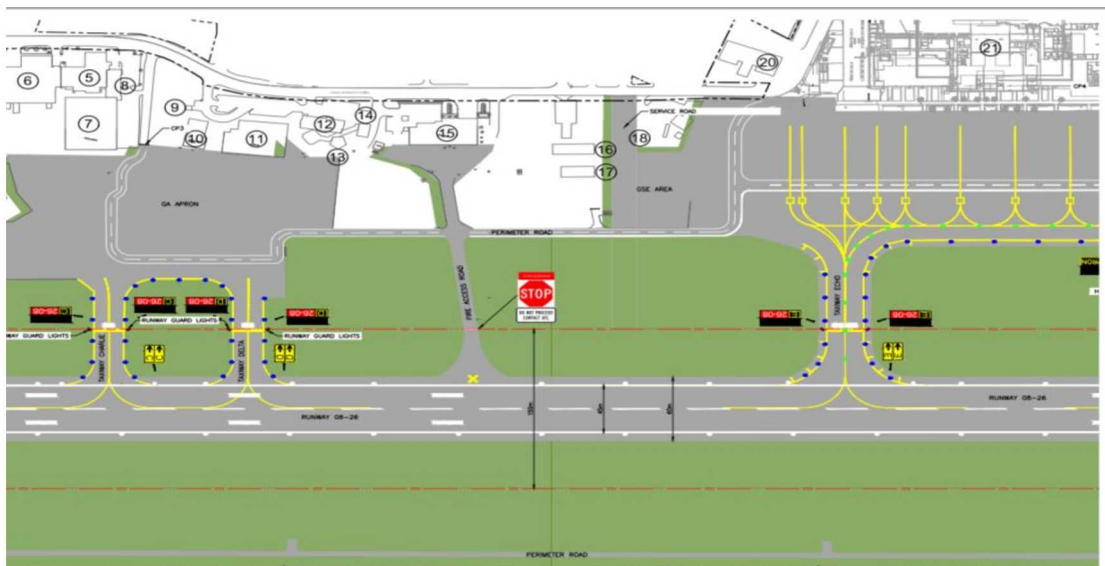


### 3.2 Taxiway 'A' and 'B'



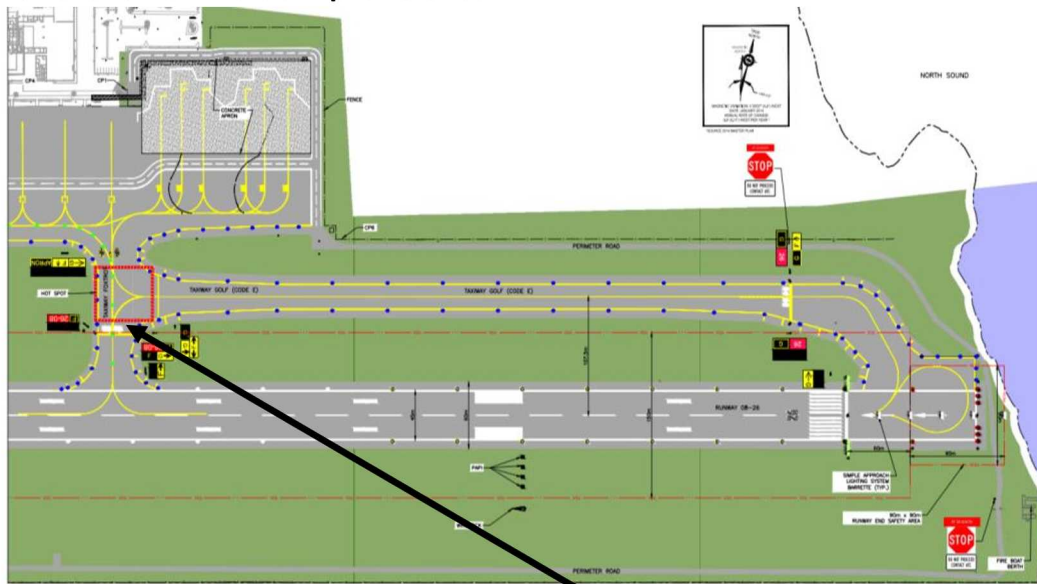
Code D and Code E aircraft to use designated 'Heavy' centre line when transitioning through Alpha and Bravo taxiway

### 3.3 Taxiway 'C' and 'D' (GA Apron) and 'E' (Commercial Apron Stands 1 - 6)



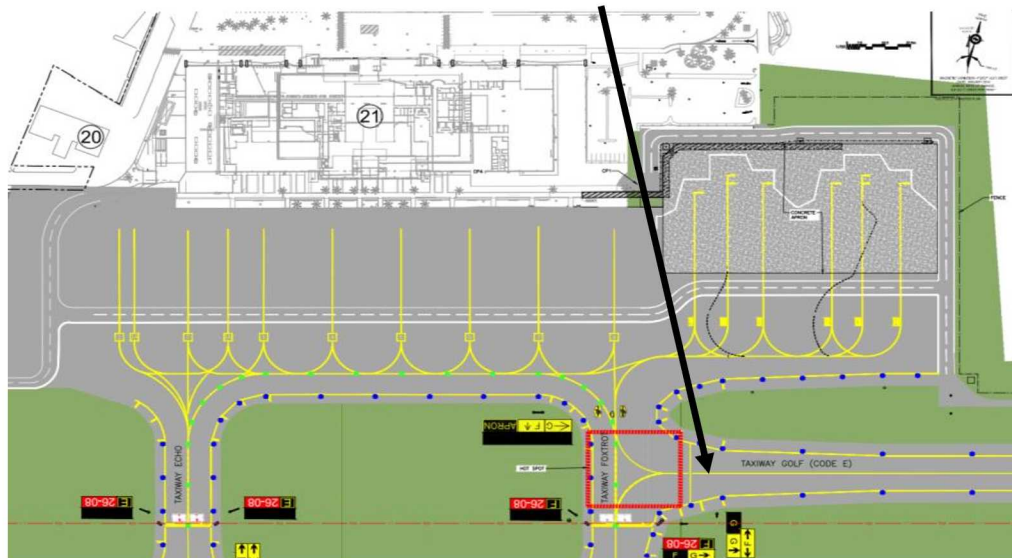


### 3.4 Taxiway 'F' and 'G' and Commercial Apron Stands 7 – 14



### 3.5 Commercial Apron Stands 1 – 14

Taxiway Intermediate  
Reporting point GOLF 1



#### **4. Queries**

4.1 Queries concerning the content of this AIC should be directed to:

Mr Andy Green  
Airport Operations Manager  
Cayman Islands Airport Authority  
[andy.green@caymanairports.com](mailto:andy.green@caymanairports.com)  
+1 345 925 2033

**The contents of this AIC supersede AIC 05/21**